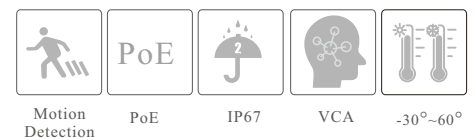
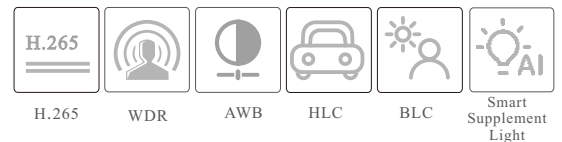


# TD-9564E4

## 6MP Dual-illumination Turret Network Camera



- H.265S/ H.265+/H.265/H.264S/H.264 +/H.264 coding
- Max. resolution: 3296 × 1856
- 20~30m white light view distance; 20~30 IR view distance
- Support smart supplement light
- ICR auto switch, true day / night vision
- 3D DNR, WDR, HLC, BLC, Smart IR and ROI coding
- Support electronic image stabilization
- Built-in micro SD card slot; up to 512G
- DC12V/PoE power supply
- IP 67 ingress protection
- Support three streams
- Support P2P function
- Support SMD
- Support remote monitoring by smart phones & tablet PCs with iOS and Android OS
- Multiple smart events can be enabled at the same time
- Dual system backup



en.tvt.net.cn

For more information, please visit our website

**Shenzhen TVT DIGITAL TECHNOLOGY CO., LTD.**

Address: 23<sup>rd</sup> Floor, Block B4, Building NO.9, Shenzhen Bay Eco-Technology Park, Nanshan District, Shenzhen, Guangdong Province, P.R.China

Tel: +86-755-36995888

Web site: <http://en.tvt.net.cn>

Fax: +86-755-33104777

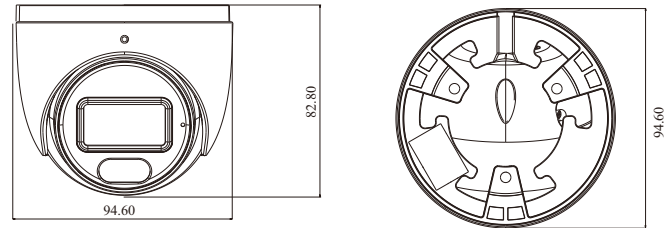
E-mail: [overseas@tvt.net.cn](mailto:overseas@tvt.net.cn)

### SPECIFICATIONS

Specifications	Model	TD-9564E4		
<b>Camera</b>				
Image Sensor	1 / 2.5 "CMOS			
Max. Resolution	3296 × 1856			
Electronic Shutter	1 / 3s ~ 1 / 100000 s			
Iris Type	Fixed Iris			
Min. Illumination	0.005lux @F1.6, AGC ON; 0 lux with illumination on			
S/N Ratio	≥50dB			
Lens	2.8 mm@F1.6, H.FoV: 104.5°; V.FoV:54.5°; D.FoV:130.5° 3.6 mm@F1.6, H.FoV:79°; V.FoV: 39°; D.FoV:98°			
Focus	Fixed			
Lens Mount	M12			
Wide Dynamic Range	120dB			
BLC	Yes			
HLC	Yes			
Defog	Yes			
Digital NR	3D DNR			
EIS	Yes			
Angle Adjustment	Pan: 0°~360°; Tilt:0°~75°; Rotation: 0°~360°			
<b>Image</b>				
Video Compression	Main stream: H.265S/ H.265+/ H.265/ H.264S / H.264+ / H.264 Sub/Third stream: H.265+/ H.265 / H.264+ / H.264/ MJPEG			
H.264 Compression Standard	Baseline Profile/Main Profile/High Profile			
Resolution	6MP (3296×1856),3K(3200×1800),4MP (2688×1520),2K (2560×1440), 1080P (1920×1080), 720P (1280×720), D1, VGA (640×480), 640×360, CIF, 480×240			
Main Stream	6MP/3K/4MP/2K/1080P( 60Hz: 1 ~ 30fps; 50Hz: 1~25fps )			
Sub Stream	1080P/720P/D1/VGA/640×360/CIF/480×240(60Hz:1~30fps; 50Hz:1~25fps)			
Third Stream	720P/D1/CIF/480×240 ( 60Hz: 1 ~ 30fps; 50Hz: 1~25fps )			
Bit Rate	32 Kbps ~10 Mbps			
Bit Rate Type	VBR / CBR			
Audio Compression	G711A / U			
Image Settings	ROI, Saturation, Brightness, Hue, Contrast, Wide Dynamic, Sharpness, Image Flip, Image Mirror, NR, etc. adjustable through client software or web browser			
ROI	8 ROI, each ROI to be configured separately			
<b>Interfaces</b>				
Network	RJ 45(10/100 Base-T)			
Video Output	No			
Audio	1CH audio input; 1CH audio output; 1CH built-in microphone			
Storage	Built-in micro SD card slot; up to 512G			
Reset	Yes			
Alarm	No			
<b>Intelligent Analytics</b>				
Smart Event	Line crossing/ region intrusion/entrance/exiting (human/vehicle classification), loitering detection, illegal parking detection, abandoned/missing object detection, people gathering detection, heat map			
Statistics	Target counting by line/area			
Exception Detection	Scene change, video blur and abnormal color detection, audio exception			
Face Detection	Face detection and face capture			
Video Metadata	Simultaneously captures human body, motor vehicle and non-motor vehicle and extracts 13 human features, 4 motor vehicle features and 1 non-motor vehicle feature			
<b>DORI Distance</b>				
Lens	Detect	Observe	Recognize	Identify
2.8mm	70m(229ft)	28m(92ft)	14m(46ft)	7m(23ft)
3.6mm	102m(334ft)	41m(133ft)	20m(66ft)	10m(33ft)
<b>Functions</b>				
Remote Monitoring	Web Client/TVT NVR/NVMS/mobile APP			
Web Browser	Chrome 92.0+/Edge 92.0+/Firefox 91.0+/Safari 13.1+			
Online Connection	Support simultaneous monitoring for up to 10 users; Support multi-stream real time transmission			

Network Protocol	UDP, IPv4, IPv6, DHCP, NTP, RTSP, RTP, RTCP, RTMP, FTP, PPPoE, DDNS, SMTP, SNMP, HTTP, 802.1x, UPnP, HTTPS, HTTP POST, P2P, QoS
Interface Protocol	ONVIF Profile S/G/M/T
API&SDK	Yes
Storage	Network remote storage; micro SD card storage
Smart Alarm	Motion detection, SMD, SD card error, SD card full, IP address conflict, cable disconnection, audio alarm
General Function	Watermark, video mask, heartbeat, image distortion correction, smart IR, smart supplement light, system backup, corridor pattern, ANR, cloud upgrade, disarming
Security	Firmware encryption, HTTPS encryption, configuration encryption, illegal login lock, IP address filtering, 802.1x authentication, basic and digest authentication for HTTP/RTSP/API service
PoE	Yes , IEEE802.3af
Supplement Light Range	IR range: 20 ~ 30 m; white light range:20 ~ 30 m
Ingress Protection	IP 67
<b>Others</b>	
Power Supply	DC12V/PoE
Power Consumption	< 9W
Storage Conditions	- 30 °C ~ 65°C (-22°F~149°F), Humidity: less than 95 % (non-condensing)
Operating Conditions	- 30 °C ~ 60 °C (-22°F~140°F), Humidity: less than 95 % (non-condensing)
Dimensions ( mm )	Ø 94.6 × 82.8
Weight ( net )	Approx. 0.472KG
Installation	Ceiling mounting; Wall mounting
Certificate	CE, FCC
Environmental Protection	Directive EU RoHS, WEEE(2012/19/EU) , directive 94/62/EC and REACH(EC1907/2006)

### DIMENSIONS



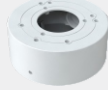
### AVAILABLE MODEL

Available Model	TD-9564E4(D/PE/AW2)
-----------------	---------------------

AVAILABLE ACCESSORIES



TD-YXH0301



TD-YXH0104



TD-YZJ0203



TD-YZJ0213



TD-YXH0301+  
TD-YZJ0810



TD-YXH0301+  
TD-YZJ0406+TD-YZJ0501



TD-YXH0301+  
TD-YZJ0406+TD-YZJ0601



TD-YZJ0213+  
TD-YZJ0501



TD-YZJ0213+  
TD-YZJ0601